




 LIVERPOOL  
PHILHARMONIC

# October Concerts



---

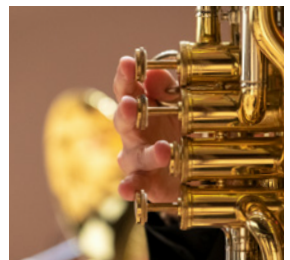
**Box Office 0151 709 3789**  
**[liverpoolphil.com](http://liverpoolphil.com)**

 [LiverpoolPhilharmonic](https://www.facebook.com/LiverpoolPhilharmonic)  
 [liverpoolphil](https://twitter.com/liverpoolphil)  
 [liverpool\\_philharmonic](https://www.instagram.com/liverpool_philharmonic)

# At last...

Live music returns to Liverpool Philharmonic Hall this Autumn, in a series of exciting one-hour concerts by the Royal Liverpool Philharmonic Orchestra and associated ensembles!

The works we've selected to perform this month are for smaller orchestral forces (up to around 30 players), to accommodate social distancing.



# Royal Liverpool Philharmonic Orchestra

Thursday 1 October 7.30pm  
Sunday 4 October 2.30pm

## Mozart

*Divertimento in D*

## Caroline Shaw

*Entr'acte for String Orchestra*

## Ives

*The Unanswered Question*

## Beethoven

*Symphony No.4*

**Joshua Weilerstein** *conductor*

Beethoven's joyous Fourth Symphony features on this diverse programme which also includes Mozart's Divertimento in D, written when he was just 16. Before the Symphony, another Liverpool first: the haunting and beautiful *Entr'acte* by Pulitzer prize-winner Caroline Shaw.



Joshua Weilerstein © Simi Candy-Clark

# Royal Liverpool Philharmonic Orchestra

Thursday 8 October 7.30pm  
Sunday 11 October 2.30pm

## Sibelius

*Suite, Mignonne*

## Beethoven

*Grosse Fuge*

## Schubert

*Symphony No.5*

**Andrew Manze** *conductor*

Schubert's youthful exuberance shines through in his Fifth Symphony (composed at the age of 19), bursting with tunes, fresh and full of life. In contrast Beethoven's *Grosse Fuge*, originally written for string quartet, is one of the composer's most profound works.



Andrew Manze © Benjamin Edlovaga

# Roderick Williams *baritone* Christopher Glynn *piano*

Monday 12 October 7.30pm

ARTIST IN  
RESIDENCE

## **Finzi**

*Songs from Before & After Summer: 'Childhood among the ferns' and 'Before & After Summer'*

## **Ireland**

*Summer Schemes, Great Things, The Self-Unseeing, Overlooking the River*

## **Britten**

*Proud Songsters (Thrushes, Finches and Nightingales)*

## **Judith Weir**

*Written on Terrestrial Things*

## **Bax**

*The Market Girl*

## **Ian Venables**

*A Kiss*

## **Britten**

*At Day-close in November, Epeisodia, Amabel, He Abjures Love*

'People often ask me why I always seem so cheerful,' says the British baritone and Liverpool Philharmonic Artist in Residence Roderick Williams, 'and I just say to them, why shouldn't I be? I'm singing wonderful music'. His passion for English song is the inspiration between this musical exploration of the landscape and language of Thomas Hardy – featuring songs by Britten, Finzi, Bax and more.



Roderick Williams © Benjamin Edwards

# Royal Liverpool Philharmonic Orchestra

Thursday 15 October 7.30pm

Sunday 18 October 2.30pm

---

## **Stravinsky**

*Octet*

## **Beethoven**

*Piano Concerto No.4*

**Vasily Petrenko** *conductor*

**Boris Giltburg** *piano*

Chief Conductor, Vasily Petrenko presents his first concert of the season, opening with Stravinsky's energetic Octet, before we welcome pianist Boris Giltburg back to perform Beethoven's Fourth Piano Concerto.

'Giltburg and the Royal Liverpool Philharmonic hit the right note, with a joyful and well-balanced performance' – *The Classic Review* on the Naxos recording of Beethoven's Piano Concerto Nos 1 and 2.



Vasily Petrenko © Mark McNulty

Musicians from the Royal Liverpool  
Philharmonic Orchestra

## Ensemble 10/10

Thursday 22 October 7.30pm

ARTIST IN  
RESIDENCE

### Athanasia Kontou

*Antigone: Pure in her crime* (world premiere)

### Dobrinka Tabakova

*Fantasy Homage to Schubert*

### Britten

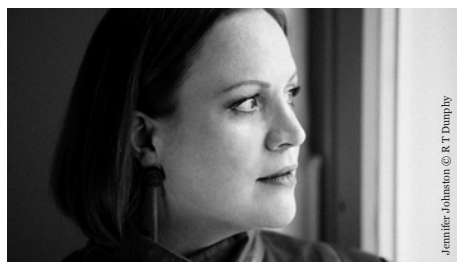
*Phaedra: dramatic cantata for mezzo-soprano  
and small orchestra*

**Geoffrey Paterson** conductor/harpsichord

**Jennifer Johnston** mezzo soprano

The heroine of Britten's *Phaedra* seizes control of a fearful destiny and we stay in Ancient Greece for Athanasia Kontou's new work as Antigone confronts her own emotions. Both are perfect showcases for Liverpool Philharmonic's current Artist in Residence through until the end of 2020, superstar mezzo-soprano, Jennifer Johnston. Geoffrey Paterson makes his Ensemble 10/10 debut.

Athanasia Kontou is winner of the 2019 Liverpool Philharmonic Christopher Brooks Composition Prize.



Jennifer Johnston © R T Dunphy

Musicians from the Royal Liverpool  
Philharmonic Orchestra

## Liverpool Wind Collective

Saturday 24 October 7.30pm

### Julian Joseph

*Othello 21* (world premiere)

### Zemlinsky

*Humoreske*

### Barber

*Summer Music*

### Jim Parker

*Mississippi Five*

**Helen Wilson** flute

**Ruth Davies** oboe

**Ausiàs Garrigós Morant** clarinet

**Gareth Twigg** bassoon

**Stephen Nicholls** horn

Julian Joseph, who wowed audiences on his last visit to Liverpool, returns as composer to introduce the world premiere of his *Othello 21* for wind ensemble. Barber's *Summer Music* was commissioned in 1956 for the principal wind players of the Detroit Symphony Orchestra, and in it you can hear influences from Gershwin and Stravinsky. Jim Parker's *Mississippi Five* is an inventive 1920s-style suite, featuring tributes to the likes of King Oliver and Bessie Smith.



Julian Joseph

Musicians from the Royal Liverpool  
Philharmonic Orchestra

## Liverpool Philharmonic Brass and Percussion Ensemble

Sunday 25 October 2.30pm

Music to include **Gabrieli, Britten and Dukas**  
**John Iveson** conductor

Members of the Royal Liverpool Philharmonic's Brass and Percussion sections join together for this celebration of all things brass and percussion, led by John Iveson, formerly principal trombone with the internationally renowned Phillip Jones Brass Ensemble and Orchestra of the Royal Opera House.



Simon Cowen © Mark McNulty

## Royal Liverpool Philharmonic Orchestra

Thursday 29 October 7.30pm

**Beethoven**  
*Piano Concerto No.5 'Emperor'*  
**Bartok**  
*Divertimento*

**Domingo Hindoyan** conductor  
**Stephen Hough** piano

Our Chief Conductor Designate joins us for his first concert of the season, in a programme featuring the mighty 'Emperor Concerto' with Liverpool favourite, Stephen Hough at the keyboard. Bartok's *Divertimento* for Strings was composed just weeks before the onset of World War 2, which eventually forced him to leave fascist Europe for the life of an exile in New York City.

*Please note the socially-distanced stage arrangement for this concert will mean the audience will be unable to see the keyboard.*



Domingo Hindoyan © Victor Santiago

# Royal Liverpool Philharmonic Orchestra

Saturday 31 October 7.30pm

Sunday 1 November 2.30pm

---

**Vaughan Williams**

*The Lark Ascending*

**Ravel**

*Tzigane for Violin and Orchestra*

**Mozart**

*Symphony No 40*

**Domingo Hindoyan** *conductor*

**Tasmin Little** *violin*

Violinist Tasmin Little, in her farewell performances in Liverpool, brings fire and passion to Ravel – inspired by a gypsy violinist and his Basque heritage. And Vaughan Williams...well, enchanted by George Meredith's poem about the skylark's song, he gives us a vision of an idyllic English countryside. The concert ends with Mozart's Symphony No 40, one of the composer's most popular works.



Tasmin Little © Benjamin Ealovega



# Isata Kanneh Mason *piano*

Wednesday 4 November 7.30pm

YOUNG ARTIST  
IN RESIDENCE

## Beethoven

*Sonata in A major, Op.2, No.2*

## Chopin

*Nocturne No.13 in C Minor, Op.48 No.1*

## Poulenc

*Nocturnes No.5 (Phalènes) and No.7  
(Assez allant)*

## Barber

*Nocturne, Op.33*

## Gershwin

*Three Preludes*

## Barber

*Piano Sonata in E- at minor, Op.26*

According to one critic, Isata Kanneh- Mason's recent solo disc *Romance* 'ranks among the most charming and engaging debuts I can recall'. But there's more to this charismatic young pianist than just an intense sensitivity, and in this imaginative solo recital she presents a colourful palette of Nocturnes by various composers, tackles landmark works by Beethoven and Gershwin, rounding off the evening with Samuel Barber's towering, ferociously difficult *Piano Sonata*.



Isata Kanneh-Mason © Robin Clewley

# Booking information

## Tickets

£32 (Boxes), £28 (Stalls/Grand Circle),  
£24 (Rear and Upper Circles).

Please note the capacity is very limited (c. 240 seats total) and seating will be done on a socially distanced (2 metre) basis.

Tickets will go on sale for renewing subscribers and donors from Wednesday 2 September at 10am.

**Tickets can be purchased by calling 0151 709 3789 (Monday to Friday 9.30am – 5.30pm) or visiting [liverpoolphil.com](http://liverpoolphil.com).** No ticket discounts are available, but members of our access scheme will have the usual benefits. If possible, please present your tickets on your phone rather than requesting printed tickets.

The Box Office at Liverpool Philharmonic Hall will be closed apart from 60 minutes prior to each performance.

## Refreshments

Please note that our Grand Foyer Bar and 1840 Room will be open 60 minutes prior to each concert, offering a range of drinks, ice creams and cakes. You'll be seated at socially-distanced tables and your order will be taken at your table. Please note that capacities are limited and customers will be seated on a first-come, first served basis.

The 1840 Room will not be functioning as a Members' bar during this period – we apologise for any inconvenience.

Alternatively, drinks can now be pre-ordered with your tickets by phone or online for enjoying inside the auditorium at your seat.

## Parking

Pre-book your parking space at the Metropolitan Cathedral car park (5 mins walk) by phone or online for £5. Patrons with access needs can book a spot in our Caledonia St Car Park (£8) by calling 0151 709 3789 (spots limited).

## For your safety and comfort

We've implemented enhanced cleaning regimes in the Hall (including regular fogging of the building), one-way systems where possible, and socially distanced seating to ensure the comfort and safety of staff and audiences.

Hand-sanitizer stations will be available throughout the building. We'll also open up additional entrances to the hall to avoid congestion. If you require assistance on arrival please enter via the accessible entrance on Hope Street.

Toilets will be open from 1 hour before each concert. Our cloakroom will be closed until further notice.

Government guidelines require that you wear a face covering during your visit, unless exempt – all our staff will also be wearing face coverings.

We encourage you to use card payments where possible in our bar and box office.

## Book with confidence

If you are unable to attend a concert due to illness, please let us know at least 24 hours in advance of the concert and we'll exchange your tickets for another performance or credit.

If a concert is cancelled, you will be eligible for a full refund or credit towards future ticket purchases.

# Royal Liverpool Philharmonic Orchestra on Demand


If you're unable to join us for live events, enjoy most of these concerts in the comfort of your home, as we launch **Royal Liverpool Philharmonic Orchestra on Demand** in early October. We'll bring the Orchestra to your living room with an innovative online experience.

Each concert will be presented in full (about a week after the live event), preceded by a live preconcert talk on Zoom with BBC Radio 3 broadcaster and author Stephen Johnson, and a post-concert Q and a session with musicians, conductors and composers in a sort of 'post match analysis', where you can ask questions and participate.

Tickets (£10) will be available in early September and concerts will be released once a week starting 7 October. For details see [www.liverpool.com/ondemand](http://www.liverpool.com/ondemand)



[liverpoolphil.com](http://liverpoolphil.com)

-  [LiverpoolPhilharmonic](https://www.facebook.com/LiverpoolPhilharmonic)
-  [liverpoolphil](https://twitter.com/liverpoolphil)
-  [liverpool\\_philharmonic](https://www.instagram.com/liverpool_philharmonic)



Liverpool Philharmonic would like to thank all our corporate partners for standing with us during this challenging time.



Printed using vegetable  
based printing inks